

# 3rd Floor, 22-23 Widegate Street

City of London

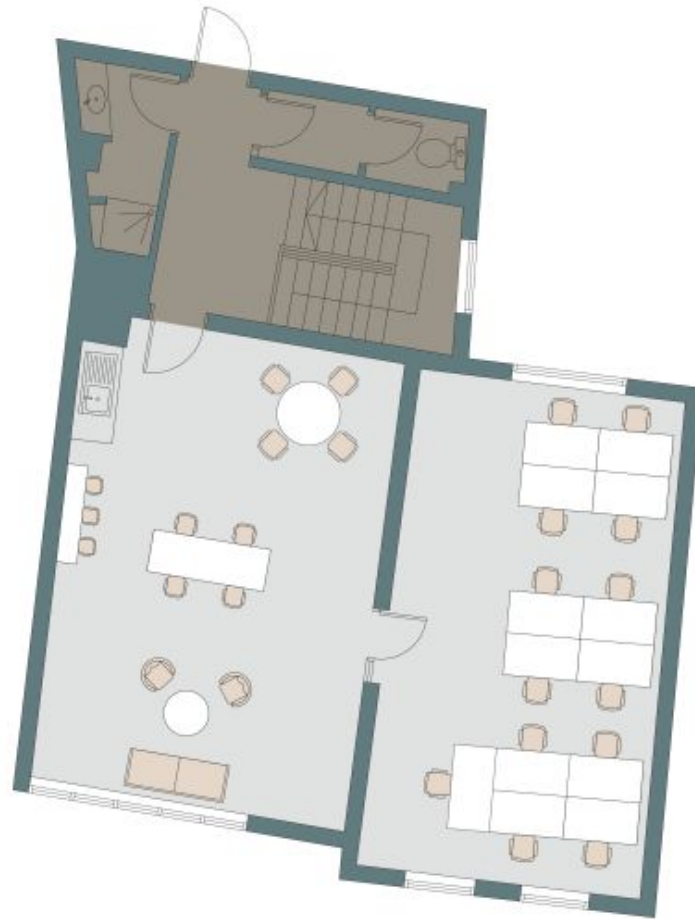
Sq Ft: 800

Monthly Price: £6,000





# Floor Plan



# About This Workspace

22-23 Widegate Street is ideally located in the City of London, just moments from Liverpool Street, Shoreditch, and Spitalfields Market. This charming office space is perfectly suited for startups, offering a smaller, more intimate environment that fosters creativity and collaboration. With its prime location at the crossroads of some of London's most vibrant neighborhoods, 22-23 Widegate Street provides a unique opportunity for emerging businesses to thrive in a dynamic and well-connected area.

# Workspace Amenities



Access Control



Air Conditioning



Excellent Natural Light



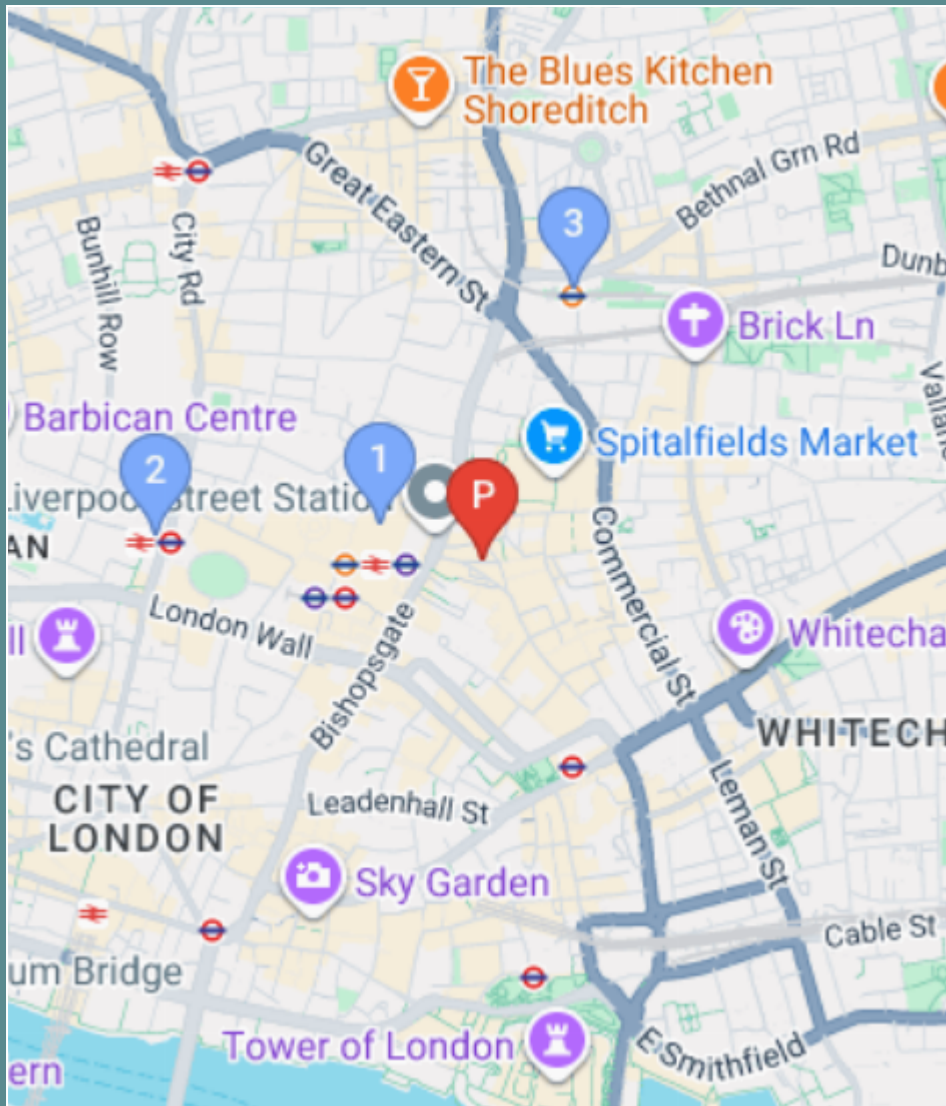
Shower

# Workspace Specification

Floor/Unit	Status	Size	Price	Term
3rd Floor	Available	800	£6,000	24 months

# Connectivity

22-23 Widegate Street is ideally located in the City of London, just moments from Liverpool Street, Shoreditch, and Spitalfields Market. This charming office space is perfectly suited for startups, offering a smaller, more intimate environment that f...



 Liverpool Street – 10 mins walk



 Shoreditch High Street – 11 mins walk



 Moorgate – 14 mins walk



# Workspace Services

Included in your sub800 workspace



## Remote Concierge Service

Our remote concierge team is on hand to support you. From sourcing catering for important meeting, to planning wellness workshops, and everything in between...



## Food & Beverage Deliveries

Enjoy a tailored choice of food and beverages delivered to your office. Our selections are carefully curated by our team to offer your business delightful options.



## Internet & Technology

Select from a variety of internet bandwidth options, along with access to other technology products to upgrade your space



## Cleaning & Waste Services

Access to allocated cleaning slots, reporting and products to suit your team's needs. Our cleaning saves you time arranging cleaning or doing it yourself.



## Furniture & Fit-Out

Browse on the sub800 shop for our extensive range of furniture items, meeting room installations, have a bespoke consultation with our team.



## Health & Safety Onboarding

A comprehensive health and safety onboarding pack that details how you can ensure your workspace is safe, as well as a list of preferred suppliers and rates



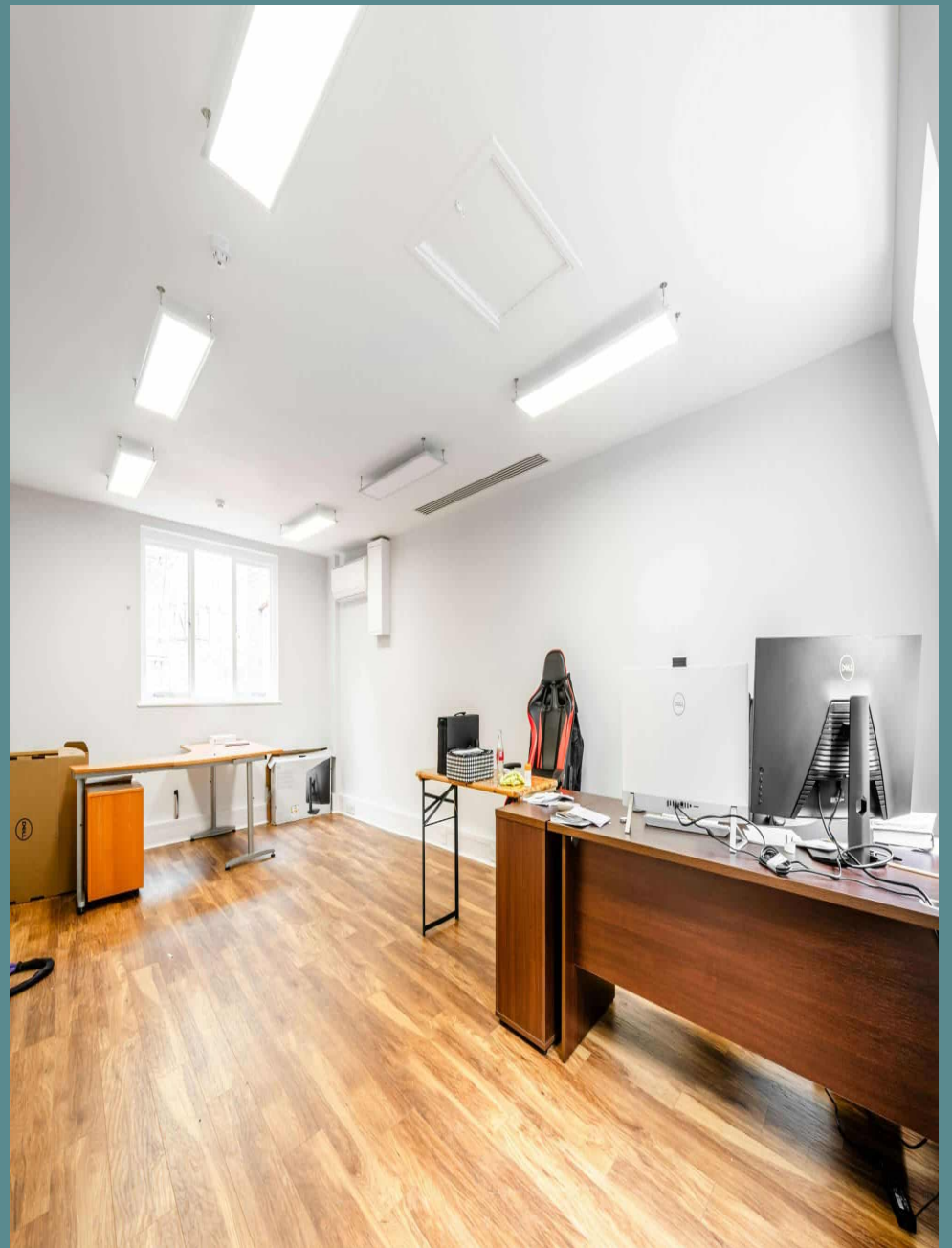
## Repairs & Support

sub800 provide your business with light repairs and the option to source specialist works with preferred suppliers and rates



## Member's Club Access

Access to exclusive member's clubs for the C-Suite level of your team, giving them access to external meeting space, events and networking opportunities





[Make An Enquiry](#)

[Book A Viewing](#)

[enquiries@sub800.com](mailto:enquiries@sub800.com) | [0207 052 3025](tel:02070523025) | [www.sub800.com](http://www.sub800.com)