

# 4th Floor, 41-42 Eastcastle Street

Fitzrovia

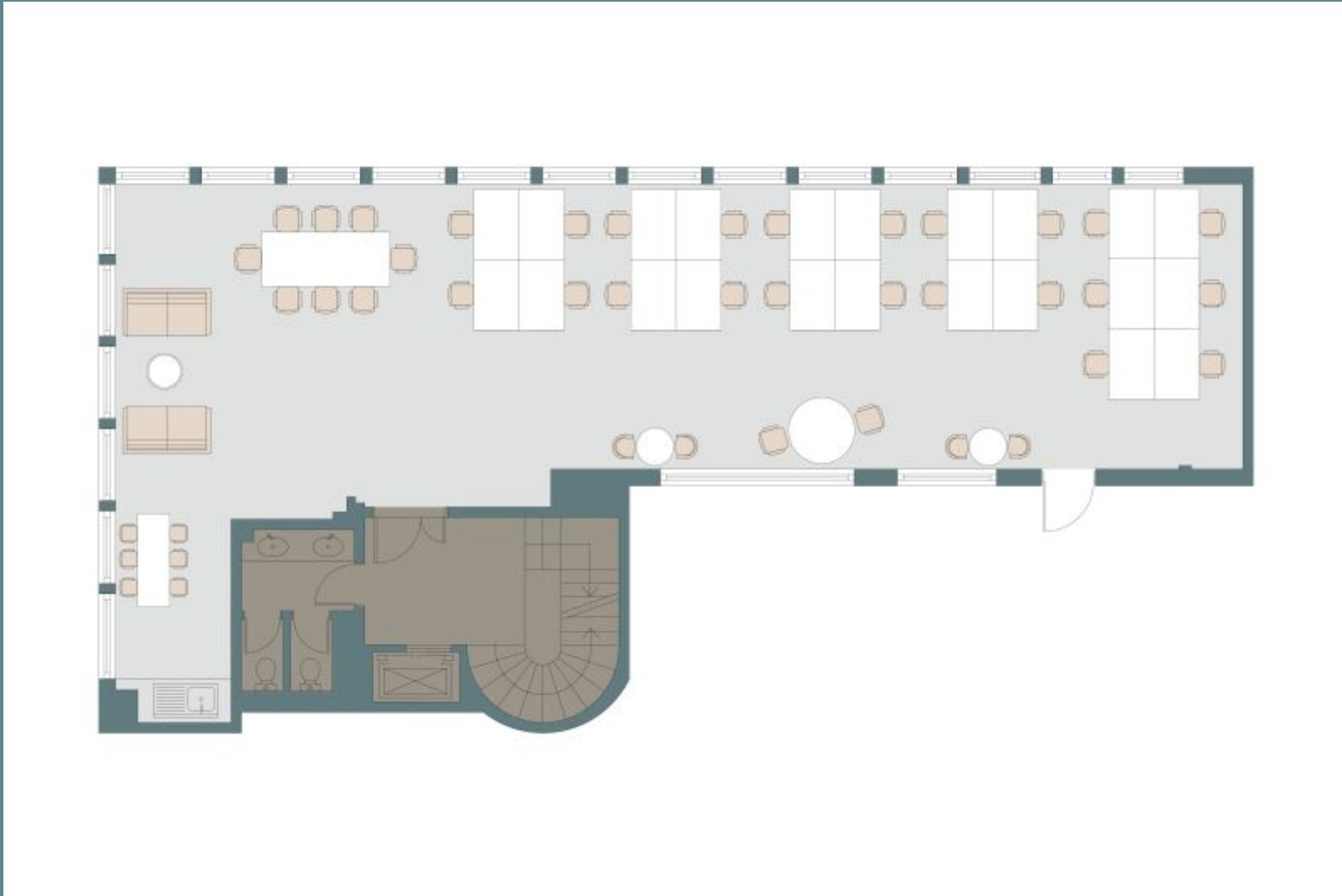
Sq Ft: 1633

Monthly Price: £22,200





# Floor Plan



# About This Workspace

Situated in the heart of Fitzrovia, 41-42 Eastcastle Street offers a bright and modern workspace in one of London's most vibrant creative districts. Currently undergoing a high-quality fit-out, the space is designed to provide a stylish and functional environment, complete with contemporary finishes and excellent natural light. With its prime location just moments from Oxford Circus and surrounded by independent cafés, restaurants, and retail hotspots, this is an ideal setting for businesses looking for a dynamic and well-connected workspace in the West End.

# Workspace Amenities



Access Control



Air Conditioning



Excellent Natural Light



Lift



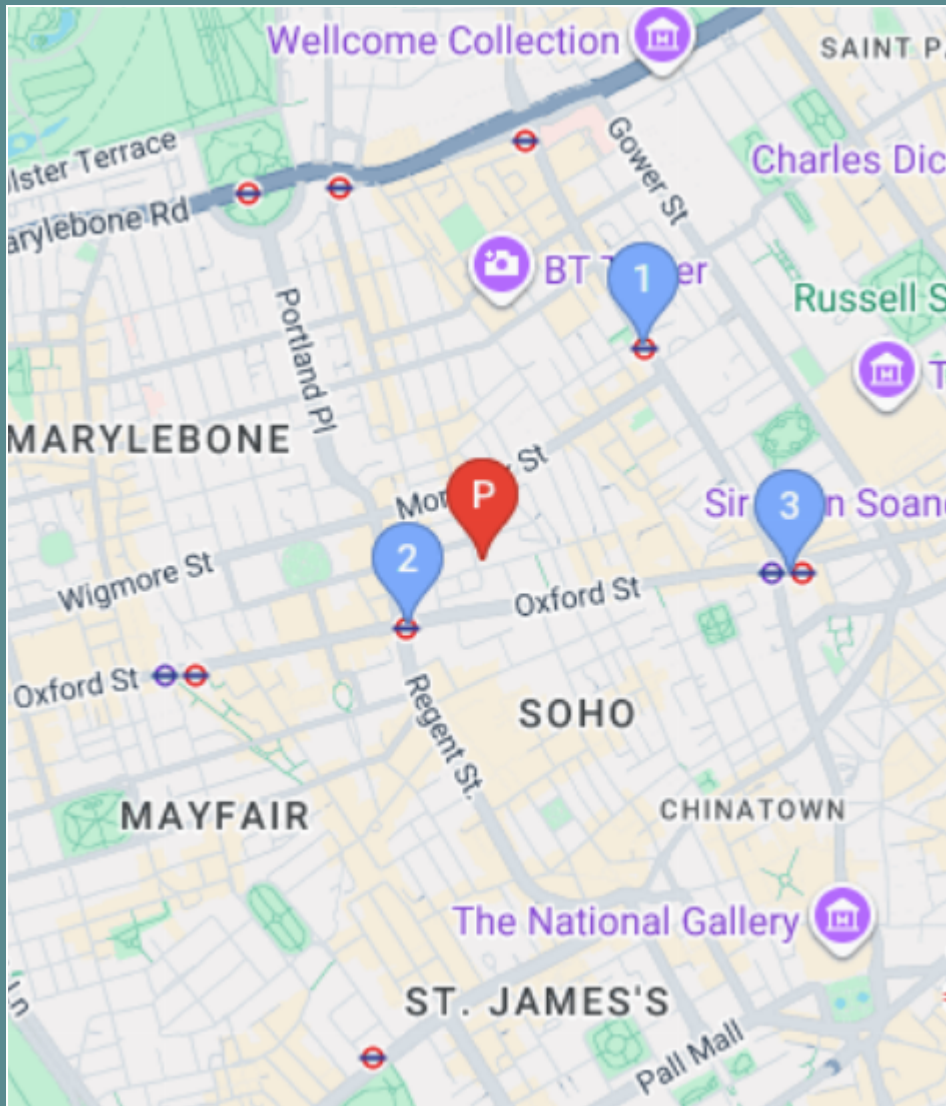
Meeting Rooms

# Workspace Specification

Floor/Unit	Status	Size	Price	Term
4th Floor	Available	1633	£22,200	24 months

# Connectivity

Situated in the heart of Fitzrovia, 41-42 Eastcastle Street offers a bright and modern workspace in one of London's most vibrant creative districts. Currently undergoing a high-quality fit-out, the space is designed to provide a stylish and functional...



Oxford Circus – 4 mins walk



Goodge Street – 10 mins walk



Tottenham Court Road – 11 mins walk



# Workspace Services

Included in your sub800 workspace



## Remote Concierge Service

Our remote concierge team is on hand to support you. From sourcing catering for important meeting, to planning wellness workshops, and everything in between...



## Food & Beverage Deliveries

Enjoy a tailored choice of food and beverages delivered to your office. Our selections are carefully curated by our team to offer your business delightful options.



## Internet & Technology

Select from a variety of internet bandwidth options, along with access to other technology products to upgrade your space



## Cleaning & Waste Services

Access to allocated cleaning slots, reporting and products to suit your team's needs. Our cleaning saves you time arranging cleaning or doing it yourself.



## Furniture & Fit-Out

Browse on the sub800 shop for our extensive range of furniture items, meeting room installations, have a bespoke consultation with our team.



## Health & Safety Onboarding

A comprehensive health and safety onboarding pack that details how you can ensure your workspace is safe, as well as a list of preferred suppliers and rates



## Repairs & Support

sub800 provide your business with light repairs and the option to source specialist works with preferred suppliers and rates



## Member's Club Access

Access to exclusive member's clubs for the C-Suite level of your team, giving them access to external meeting space, events and networking opportunities





[Make An Enquiry](#)

[Book A Viewing](#)

[enquiries@sub800.com](mailto:enquiries@sub800.com) | [0207 052 3025](tel:02070523025) | [www.sub800.com](http://www.sub800.com)