

2nd Floor, 265 Tottenham Court Road

Fitzrovia

Sq Ft: 5788

Monthly Price: £81,950





Floor Plan



About This Workspace

Located in the heart of Fitzrovia, 265 Tottenham Court Road offers over 5,000 sq ft of high-quality workspace in one of London's most sought-after neighbourhoods. The scale of the unit provides plenty of room for flexibility, whether you're envisioning an open, collaborative floor plan or a more structured office layout. With its generous proportions and prime location, the space is perfectly suited for ambitious businesses looking to make a statement while enjoying the connectivity and energy of central London.

Workspace Amenities



Air Conditioning



Cycle Storage



DDA Compliant



Excellent Natural Light



Lift



Shower



Manned Reception

Workspace Specification

Floor/Unit	Status	Size	Price	Term
2nd Floor	Available	5788	£81,950	24 months

Connectivity

Located in the heart of Fitzrovia, 265 Tottenham Court Road offers over 5,000 sq ft of high-quality workspace in one of London's most sought-after neighbourhoods. The scale of the unit provides plenty of room for flexibility, whether you're envisioni...



 Tottenham Court Road – 1 min walk



 Goudge Street – 7 mins walk



 Bond Street – 19 mins walk



Workspace Services

Included in your sub800 workspace



Remote Concierge Service

Our remote concierge team is on hand to support you. From sourcing catering for important meeting, to planning wellness workshops, and everything in between...



Food & Beverage Deliveries

Enjoy a tailored choice of food and beverages delivered to your office. Our selections are carefully curated by our team to offer your business delightful options.



Internet & Technology

Select from a variety of internet bandwidth options, along with access to other technology products to upgrade your space



Cleaning & Waste Services

Access to allocated cleaning slots, reporting and products to suit your team's needs. Our cleaning saves you time arranging cleaning or doing it yourself.



Furniture & Fit-Out

Browse on the sub800 shop for our extensive range of furniture items, meeting room installations, have a bespoke consultation with our team.



Health & Safety Onboarding

A comprehensive health and safety onboarding pack that details how you can ensure your workspace is safe, as well as a list of preferred suppliers and rates



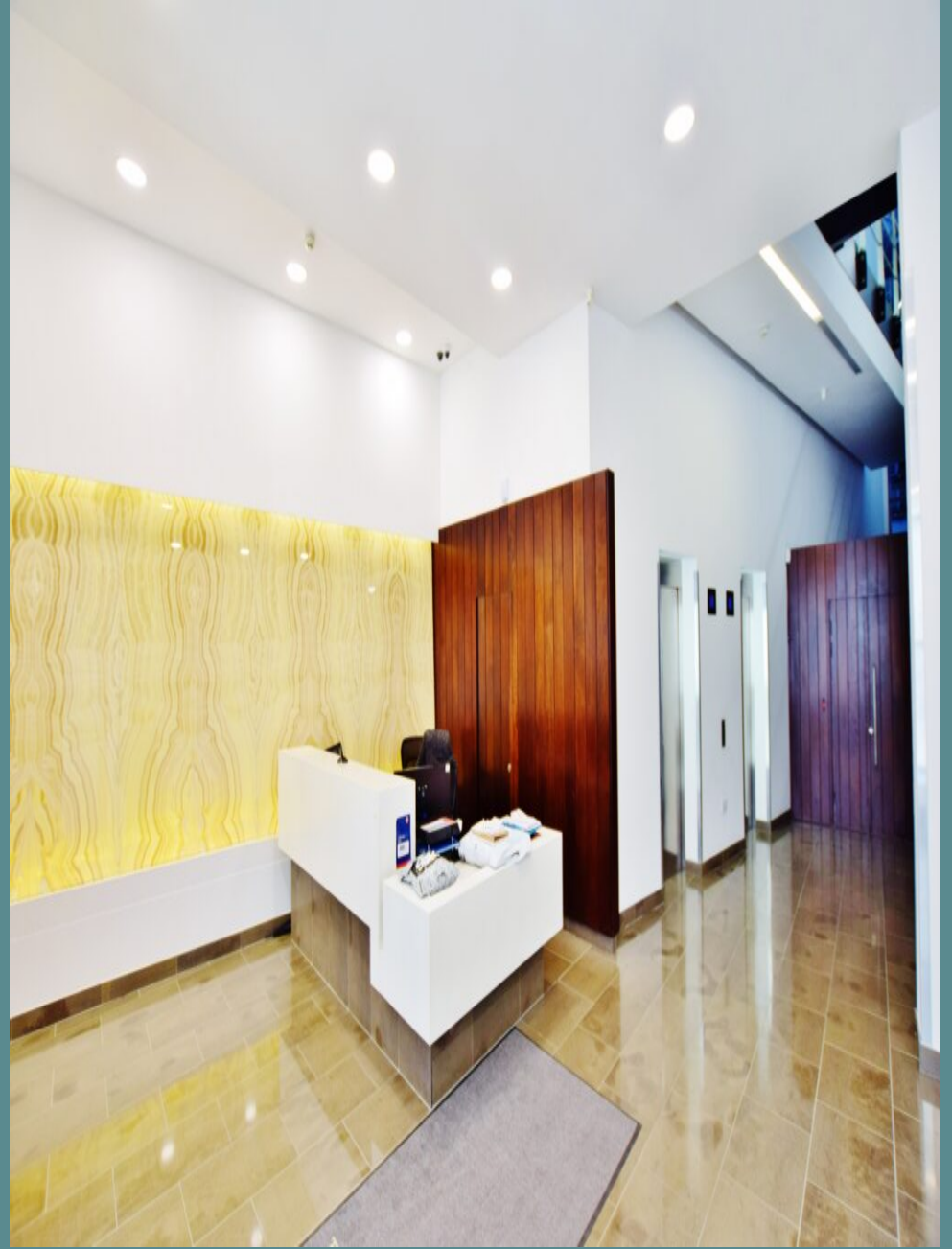
Repairs & Support

sub800 provide your business with light repairs and the option to source specialist works with preferred suppliers and rates



Member's Club Access

Access to exclusive member's clubs for the C-Suite level of your team, giving them access to external meeting space, events and networking opportunities





[Make An Enquiry](#)

[Book A Viewing](#)

enquiries@sub800.com | [0207 052 3025](tel:02070523025) | www.sub800.com